



www.indenor-retro.de
Ersatzteile für INDENOR Dieselmotoren

Spare parts for indenor diesel engine Pieces de rechange indenor diesel
Pari di ricambio indenor diesel Piezas de requestos indenor diesel

**V. Puppe, Fischerstr. 3, 17033 Neubrandenburg
germany**

eMail: anlasser@indenor-retro.de

Mobil: 0049- 178- 6629038

spare parts

pieces de rechange

Ersatzteile

parti di recambo

piezas de repquestos

Katalog 2015

Indenor XD3 XD3T





Indenor XD3 XD3T

Summary
Sommaire
Inhaltsverzeichnis
Sommario
Sumario



| | | | |
|----------------------------------|--------------------------------|------------------------------|---|
| shipping & payment | paiment & livraison | Versand und Bezahlung | 3 |
| Engine | moteur | Motor | motore motor 4 |
| Cylinder-bloc | Motorblock | bloc-cylindre | monoblocco bloque motor 5 |
| Gaskets | Dichtungen | joints | guarnizione junta 6 |
| Crankshaft | Kurbelwelle | vilebrequin | albero motori cinguenal 8 |
| Con.rod piston | Pleuel Kolben | bielle piston | biella pistoni biela piston 9 |
| Flywheel | Schwungrad | volant | volani volantes 10 |
| Plug,glowplug | Stopfen,Glühkerzen | bouchon,bougies | tappo,candella tapon,bujia 11 |
| Cylinder head | Zylinderkopf | culasse | teste cilindri culatas 12 |
| Rocker | Kipphebel | culbuter | bilanciere balancin 14 |
| Aut. Fast idling controls | | Autom. Schnellauf | sonde ralenti 16 |
| Camshaft | Nockenwelle | amber a comes | albero a c ame 17 |
| Cover | Zylinderhauben | couvre | coperchio tapaculata 18 |
| Gear house | Steuergehäuse | cart.de distr. | carter carter 19 |
| Oilpan | Ölwanne | carter a'huile | coppa dell'olio carter inferior 20 |
| Waterpump | Wasserpumpe | pompe a eau | pompa aqua bomba de agua 21 |
| Oil filter | Ölfilter | filter a huile | filtri olio filtros de aceite 22 |
| | Pumpen gemeinsame Teile | | 23 |
| Injectors & pumps | Düsen Rohre Pumpen | injector pomp | 24 |
| Manifolds | Krümmen | collecteurs | di scarico de escape 25 |
| Charger | Turbolader | compresseur | compressori compressors 26 |
| Starter | Anlasser | demarreur | avviatore motores de arranque 27 |
| Books | Bücher | livres | libri libros 28 |



www.indenor-retro.de
Ersatzteile für INDENOR Dieselmotoren

Spare parts for indenor diesel
Pari di ricambio indenor diesel

Pieces de rechange indenor diesel
Piezas de requestos indenor diesel

**Volkmar Puppe, Fischerstr.3 , 17033 Neubrandenburg,
Germany**

eMail: anlasser@indenor-retro.de

Mobil: 0049- 178- 6629038

Steuer Nr.: 072/ 258 / 02798
Ust.-ID.-Nr.: DE257740168

Price in Euro, shipping + 19%VAT
neu = neu oder alter Lagerbestand, new or new-old-stock
recon= instandgesetzt

Payment - Delivery

Zahlung - Lieferung

Paiment - Livraisons

Descreption of parts

Type of motor or unit, motor serial numbers, in case of doubt, enclose, if possible, with the order, a sketsch with dimensions of the worn part to be replaced ed, eo even send along the part itself

Payment - Delivery

Our prices are net, without discount nad refer to parts from our warehouse. The prices shown are only indicative and may be modified without prior notice. All our supplies must be pais cash. A delay in delivery, regardless of the cause, the extent and effects to the buyer, may never justify any payment of damages.

Returning Parts

Any returns of parts should be sent :“ Delivery and Packing prepaid” to : indenor-retro

Bezeichnung der Ersatzteile

Typ des Motors oder Aggregates, Motornummer, Artikelnummer des Teiles mit genauer Bezeichnung, abgenutztes Teil beifügen oder das Teil selbst einsenden.

Zahlung - Lieferungen

Unsere Preise verstehen sich netto, ohne Skonto, ab Lager.

Die Preise sind informationsweise gegeben und können ohne Voranmeldung geändert werden. Unsere Lieferungen sind bar zahlbar.

Unsere Sendungen erfolgen gegen Nachnahme. Ein Lieferverzug aus irgendeinem Grund, für irgendeine Dauer oder mit irgendwelchen Folgen für den Kunden kann auf keinen Fall Recht auf Schadenersatz geben.

Rücksendung der Teile

Rücksendungen müssen „Fracht und Verpackungsfrei“ an unsere Firma erfolgen!

Destignation des Pieces

Le type du moteur ou du groupe, le numero du moteur, joindre si possible a la commande un croquis cote de la pieces usagee a remplacer ou meme envoyer la piece au modele

Piament - Livraisons

Noa prix sont nets, sans escompte, es s'entendent pour pieces prises en nos magasins. Les prix indiques ne sons donnees qua titre indicative et peuvent etre modifies sans preavis. Toutes nos fournitures doivent etre reglees au comptant. Un retard de livraison, quelle qu'en soient les causes, la duree ou les consequences pour l'acheteur, ne peut jamais donner lieu a des dommages interest.

Retour des Pieces

Les retours eventuels des pieces doivnt etra fait: indenor-retro



www.indenor-retro.de
Ersatzteile für INDENOR Dieselmotoren

Spare parts for indenor diesel
 Parti di ricambio indenor diesel

Pieces de rechange indenor diesel
 Piezas de requestos indenor diesel

eMail: anlasser@indenor-retro.de

Mobil: 0049- 178- 6629038

Engine
 Moteur
 Motor
 Motore
 Motor

| P | No | designation | Qual. |
|---|------|---|-------|
| 1 | 0400 | Engine with new cylinderhead | new |
| | 0420 | Engine with new cylinderhead and injection system | recon |
| | 0430 | Complete engine | recon |
| | | | |



0430



0400

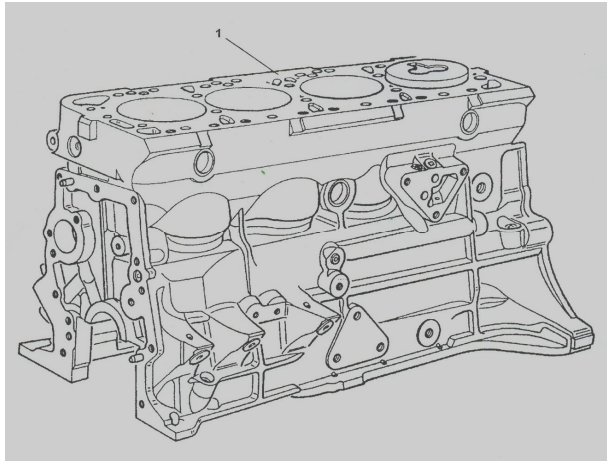


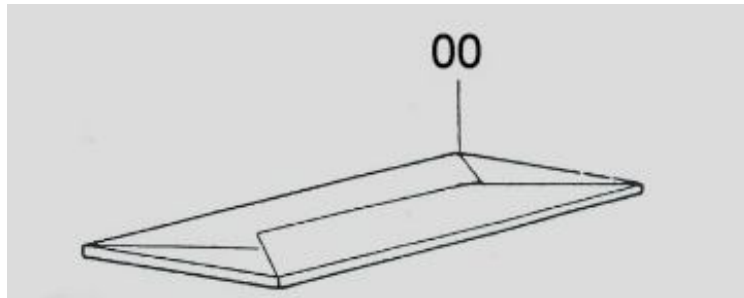
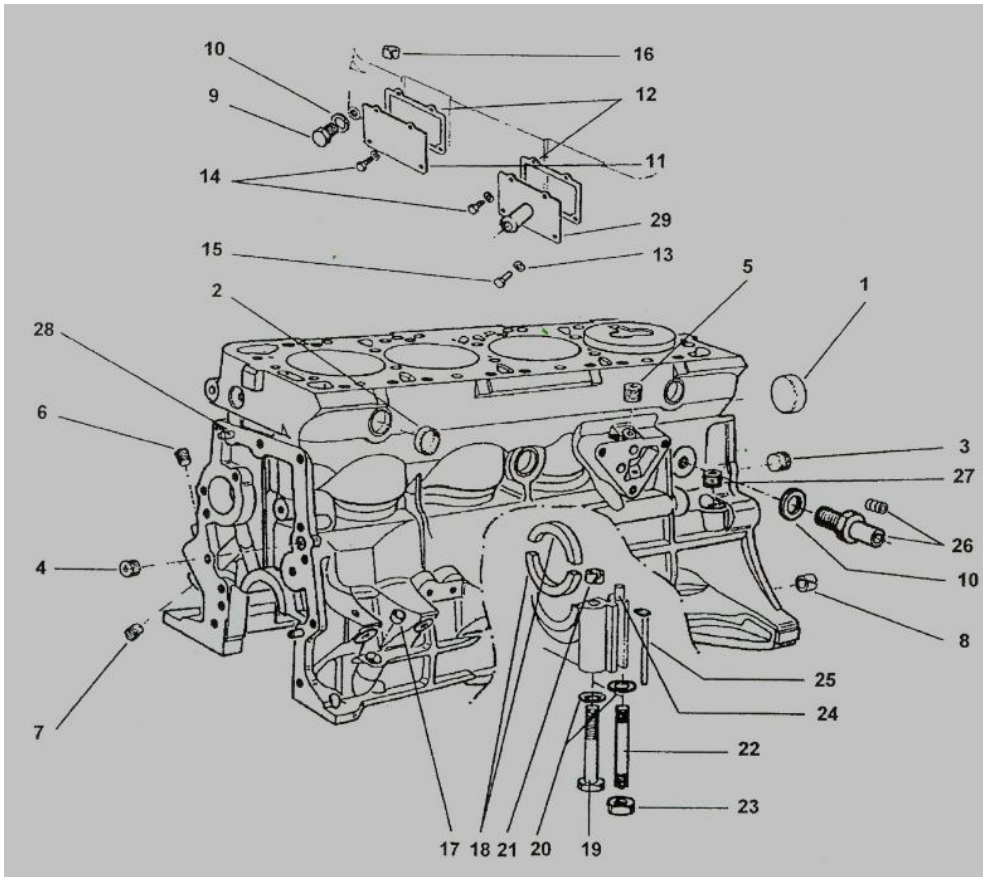
eMail: anlasser@indenor-retro.de

Mobil: 0049- 178- 6629038

Cylinder-Block
 Bloc-Cylindres
 Motorblock
 Monoblocco
 Bloque Motor

| P | No | designations | Qual. |
|---|------|-----------------------|-------|
| 1 | 0510 | Bloc with new pistons | recon |
| | | | |
| | | | |
| | | | |
| | | | |







www.indenor-retro.de
Ersatzteile für INDENOR Dieselmotoren

Spare parts for indenor diesel engines
 Parti di ricambio indenor diesel

Pieces de rechange indenor diesel
 Piezas de requestos indenor diesel

eMail: anlasser@indenor-retro.de

Mobil: 0049- 178- 6629038

Plugs Gaskets
 Bouchon Joints
 Stopfen, Dichtungen
 Tappo Guarnizione
 Tapon Junta

| P | No | designations | Qual. |
|----|------|-------------------------------------|-------|
| 1 | 0701 | Plug | New |
| 2 | 0702 | Plug | New |
| 3 | 0703 | Plug | Recon |
| 4 | 0704 | Plug | Recon |
| 5 | 0705 | Plug | Recon |
| 6 | 0706 | Plug | Recon |
| 7 | 0707 | Plug | Recon |
| 8 | 0708 | Pin | Recon |
| 9 | 0709 | Plug | Recon |
| 10 | 0710 | Gasket | New |
| 11 | 0711 | Plate | Recon |
| 12 | 0712 | Gasket | New |
| 13 | 0713 | Washer | New |
| 14 | 0714 | Screw | Recon |
| 16 | 0716 | Pin | Recon |
| 18 | 0718 | Gasket | New |
| 19 | 0719 | Screw | Recon |
| 25 | 0725 | Gasket | New |
| 26 | 0726 | Adapter | Recon |
| 00 | 0700 | Gasket set with cylinderhead-gasket | New |



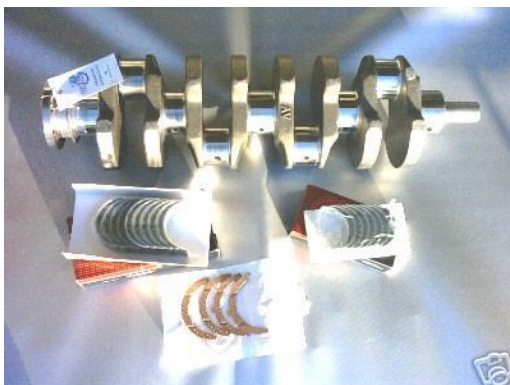
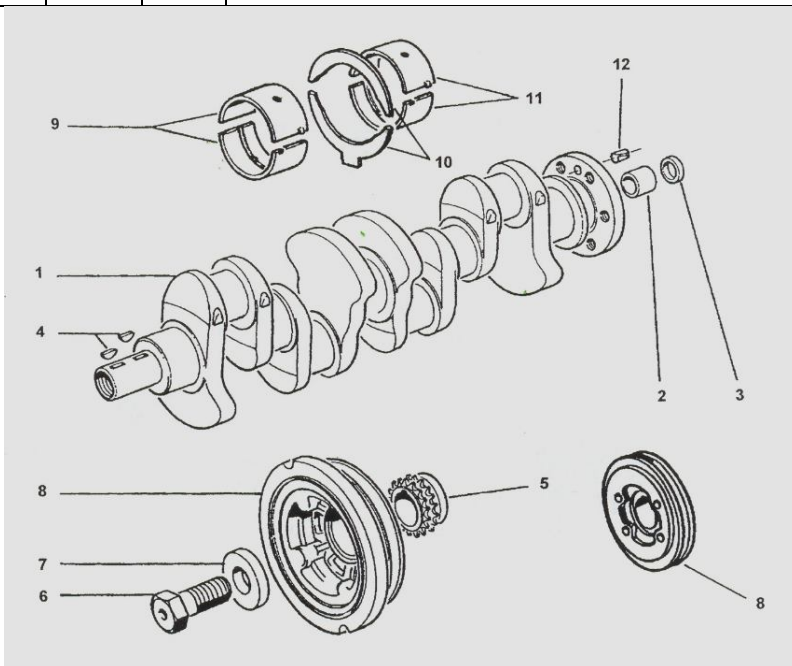


eMail: anlasser@indenor-retro.de

Mobil: 0049- 178- 6629038

Crankshaft
 Vilebrequin
 Kurbelwelle
 Alberi
 Cinguenales

| P | No | designations | Qual. |
|----|------|------------------------------------|-------|
| 1 | 0801 | Crankshaft with new bearing shells | recon |
| 4 | 0804 | Key | recon |
| 5 | 0805 | Gear | Recon |
| 6 | 0806 | Screw | recon |
| 7 | 0807 | Washer | Recon |
| 8 | 0808 | Pulley | Recon |
| 9 | 0809 | Bearing shell | New |
| 11 | 0811 | Side stopp | New |
| | | | |
| | | | |



www.indenor-retro.de



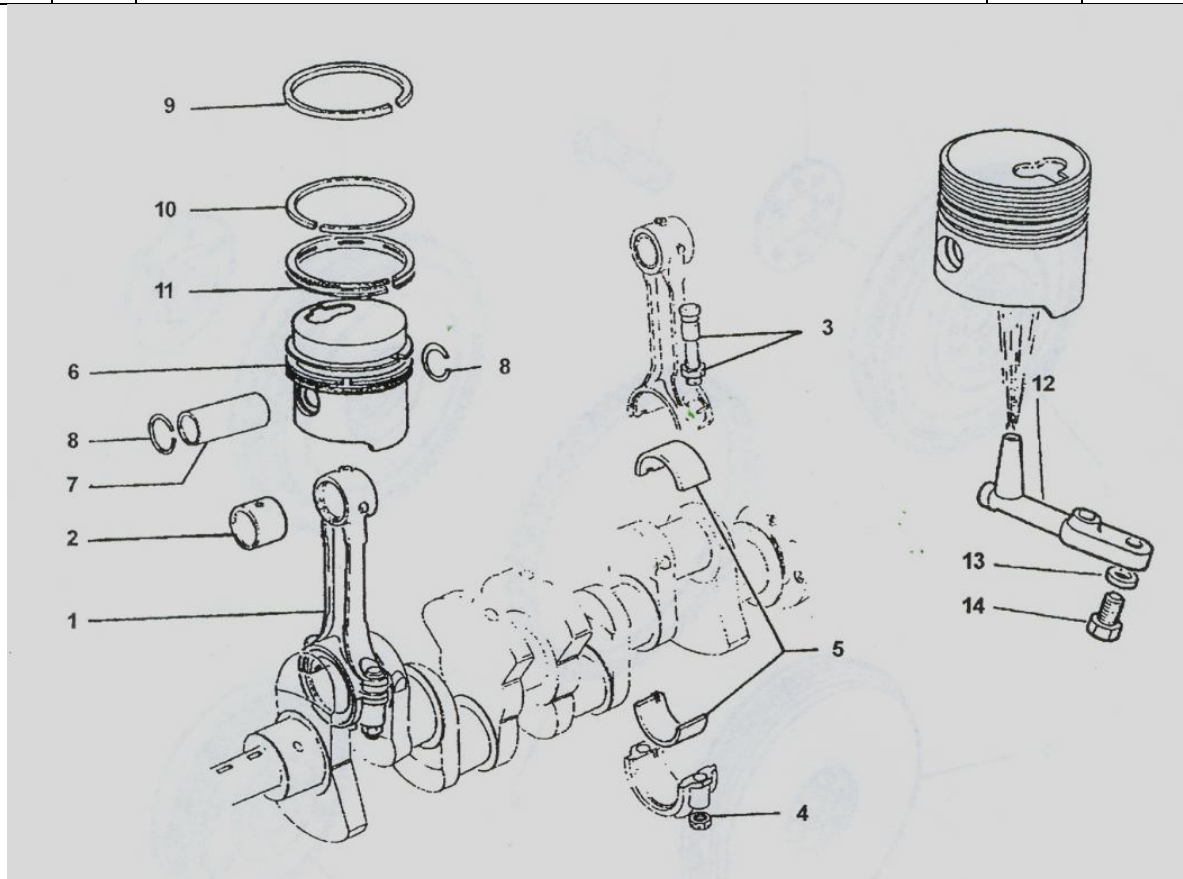
eMail: anlasser@indenor-retro.de

Mobil: 0049- 178- 6629038

Connect. Rod, Pistons
Bielle, Piston
Pleuel, Kolben
Biella, Pistone
Biela, Piston



| P | No | designations | Qual. |
|----|------|------------------|-------|
| 1 | 0901 | Connecting rod | Recon |
| 2 | 0902 | Bushing | New |
| 3 | 0903 | Bolt | New |
| 4 | 0904 | Nut | New |
| 5 | 0905 | Bearins shell | New |
| 6 | 0906 | Piston | New |
| 7 | 0907 | Piston pin | Recon |
| 8 | 0908 | Circlip | Recon |
| 9 | 0909 | Top ring | New |
| 10 | 0910 | Compression ring | New |
| 11 | 0911 | Scraper ring | New |
| 12 | 0912 | Nozzle | Recon |
| 13 | 0913 | Washer | Recon |
| 14 | 0914 | screw | Recon |
| | | | |
| | | | |



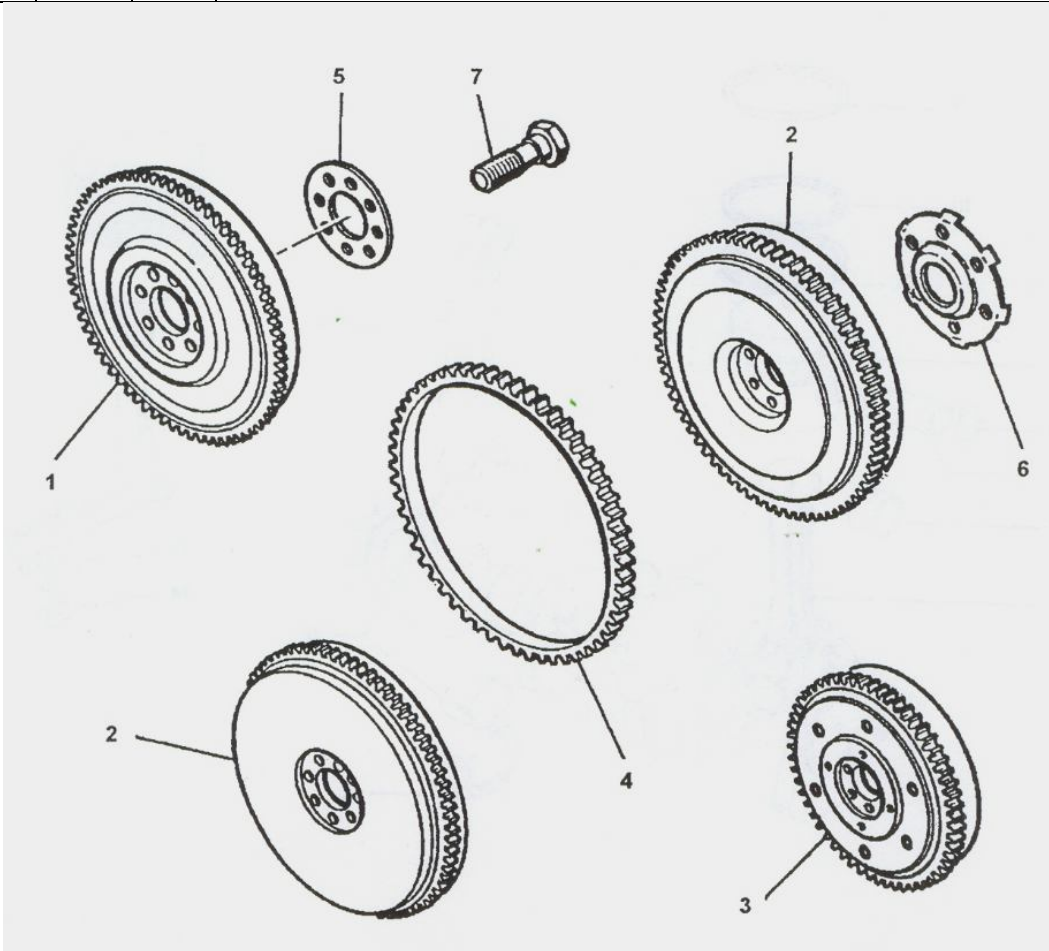


eMail: anlasser@indenor-retro.de

Mobil: 0049- 178- 6629038

Flywheel
 Volant
 Schwungrad
 Volani
 Volantes

| P | No | designations | Qual. |
|---|------|-----------------------|-------|
| 1 | 1001 | flywheel 146 dents | Recon |
| 2 | 1002 | Flywheel | Recon |
| 4 | 1004 | Starterring 146 dents | New |
| 5 | 0105 | Flange 8 holes | Recon |
| 6 | 1006 | Flange 6 holes | Neu |
| 7 | 1007 | screw | Neu |



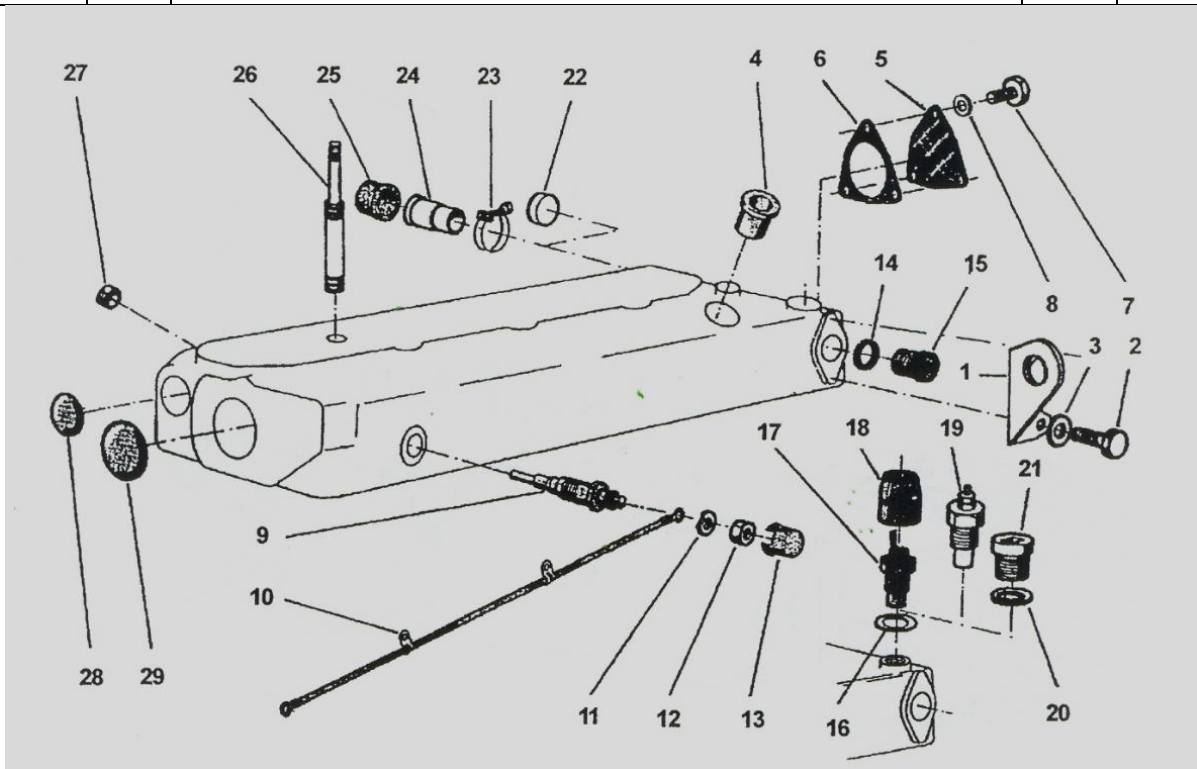


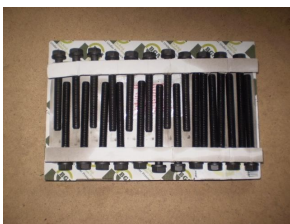
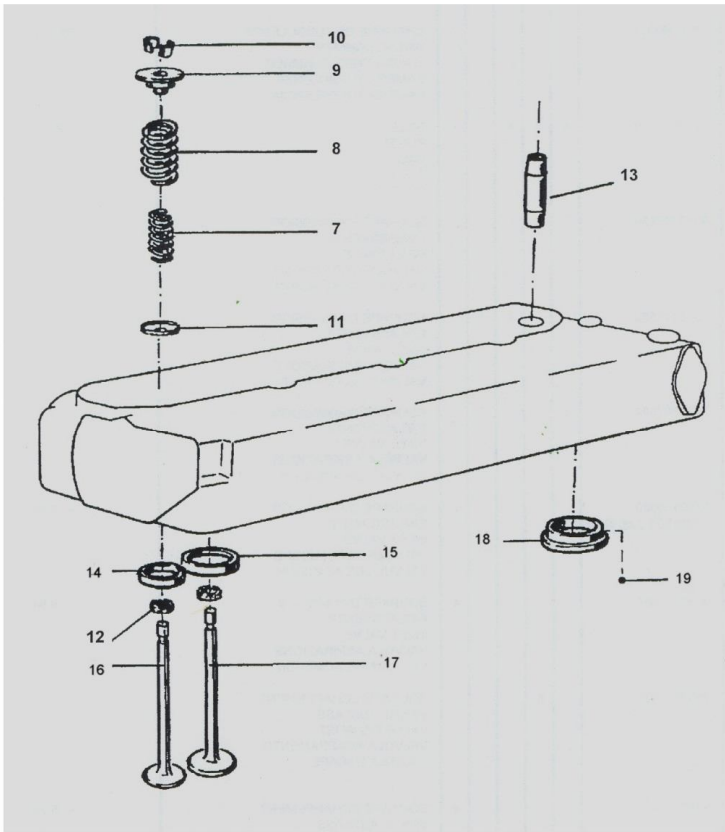
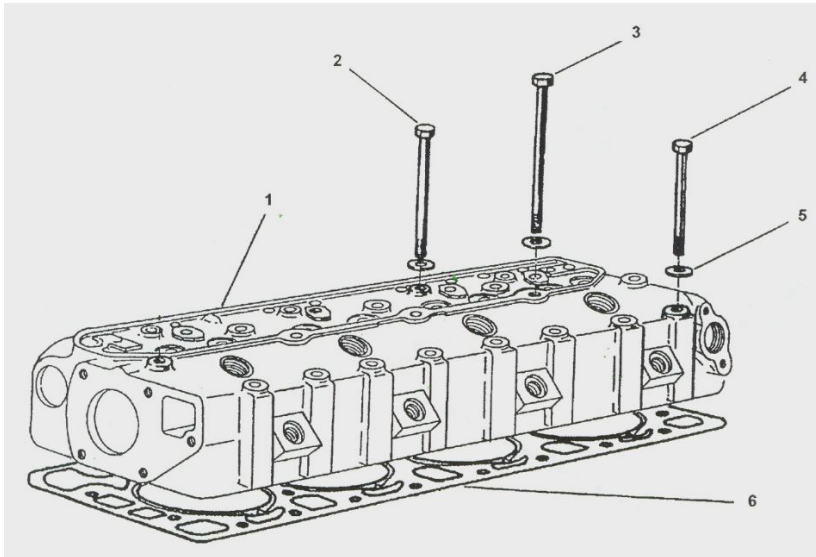
eMail: anlasser@indenor-retro.de

Mobil: 0049- 178- 6629038

Plugs, Glowplugs
Bouchon, Bougies
Stopfen, Glühkerzen
Tappo, Candella
Tapon, Bujia

| P | No | | designations | Qual. | |
|----|------|--|--------------|--------------|--|
| 1 | 1101 | | Plate | Recon New | |
| 2 | 1102 | | Screw | New | |
| 4 | 1104 | | Protector | Recon | |
| 5 | 1105 | | Plate | Recon New | |
| 6 | 1106 | | Gasket | New | |
| 7 | 1107 | | Screw | New | |
| 9 | 1109 | | Glow plug | New | |
| 10 | 1110 | | Cable | Recon New | |
| 12 | 1112 | | Nut | New | |
| 26 | 1126 | | Bolt | Recon | |
| 28 | 1128 | | Plug | New | |
| 29 | 1129 | | plug | New | |







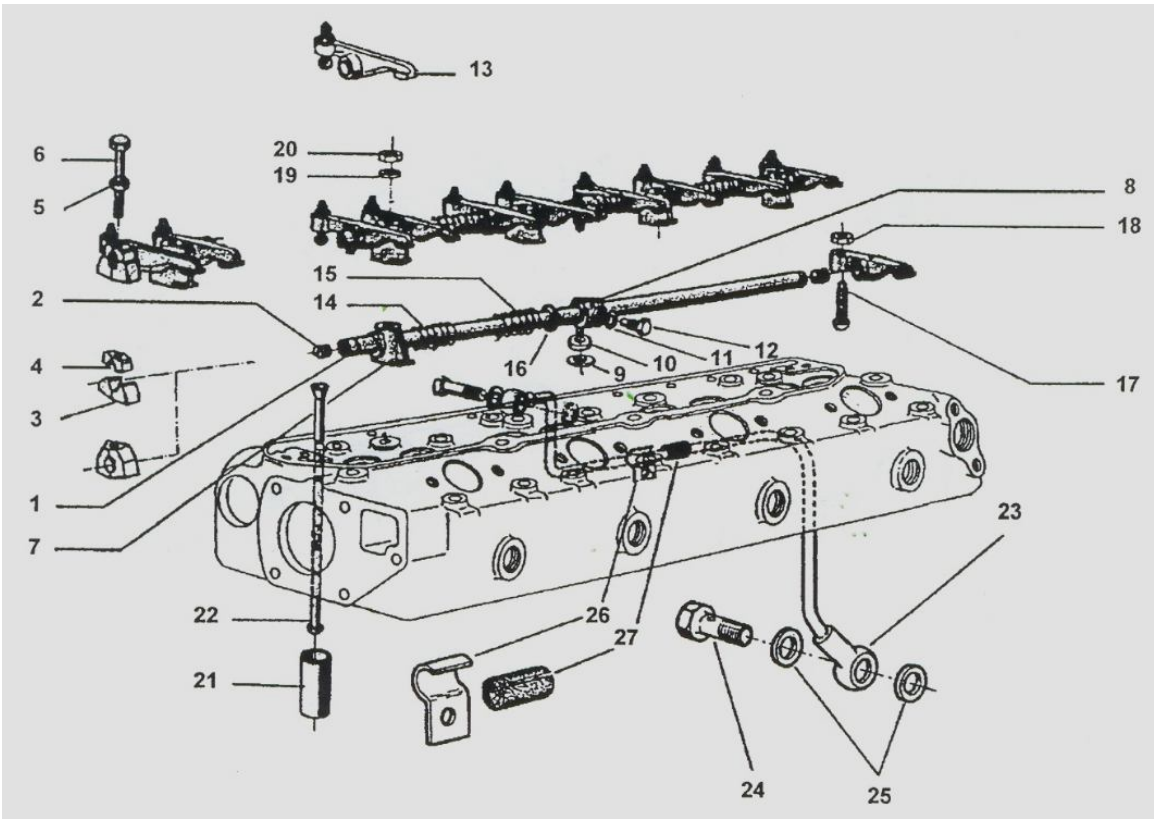
eMail: anlasser@indenor-retro.de

Mobil: 0049- 178- 6629038

Cylinder Head
 Culasse
 Zylinderkopf
 Teste Cilindri
 Culatas

| P | No | Desinations | Qual. |
|----|------|--------------------------|--------------|
| 1 | 1301 | Cylinderhead | New |
| 1 | 1300 | Cylinderhead with valves | New |
| 2 | 1302 | Screw | New |
| 3 | 1303 | Screw | New |
| 4 | 1304 | Screw | New |
| 5 | 1305 | Washer | New |
| 6 | 1306 | Cylinderhead gasket | New |
| | 1399 | P2, 3, 4 in kit box | New |
| 7 | 1307 | Spring | Recon |
| 8 | 1308 | Spring | Recon |
| 9 | 1309 | Retainer | Recon |
| 10 | 1310 | Cono | Recon |
| 11 | 1311 | Retainer | Recon |
| 12 | 1312 | Gasket | New |
| 13 | 1313 | Valve guide | New |
| 14 | 1314 | Sitzring Auslass | New |
| 15 | 1315 | Sitzring Einlass | New |
| 16 | 1316 | Valve exhaust | New Recon |
| 17 | 1317 | Inlet valve | New Recon |
| 18 | 1318 | Turbulence chamber | New recon |







eMail: anlasser@indenor-retro.de

Mobil: 0049- 178- 6629038

Rocker
 Culbuteur
 Kipphebe
 Bilanciere
 Balancin

| P | No | designations | Qual. |
|----|------|--------------------------|--------------|
| 1 | 1501 | Pin | New Recon |
| 3 | 1503 | Bracket | Recon |
| 4 | 1504 | Clamp | Recon |
| 5 | 1505 | Washer | Recon |
| 6 | 1506 | Screw | Recon |
| 7 | 1507 | Bracket | Recon |
| 8 | 1508 | Intermediate bearing | Recon |
| 9 | 1509 | Gasket | New |
| 12 | 1512 | Screw | Recon |
| 13 | 1513 | Rocker | New Recon |
| 14 | 1514 | Spring | Recon |
| 15 | 1515 | Spring | Recon |
| 16 | 1516 | Washer | Recon |
| 17 | 1517 | Screw | Recon |
| 18 | 1518 | Nut | New |
| 19 | 1519 | washerScheibe | Recon |
| 20 | 1520 | Nut | Recon |
| 21 | 1521 | Tappet | New |
| 22 | 1522 | Rocker arm operating rod | New |
| 23 | 1523 | Tube | Recon |
| 24 | 1524 | Screw | Recon |
| 25 | 1525 | Gasket | New |
| 26 | 1526 | Bracket | Recon |
| 27 | 1527 | ring | Recon |
| | | | |
| | | | |





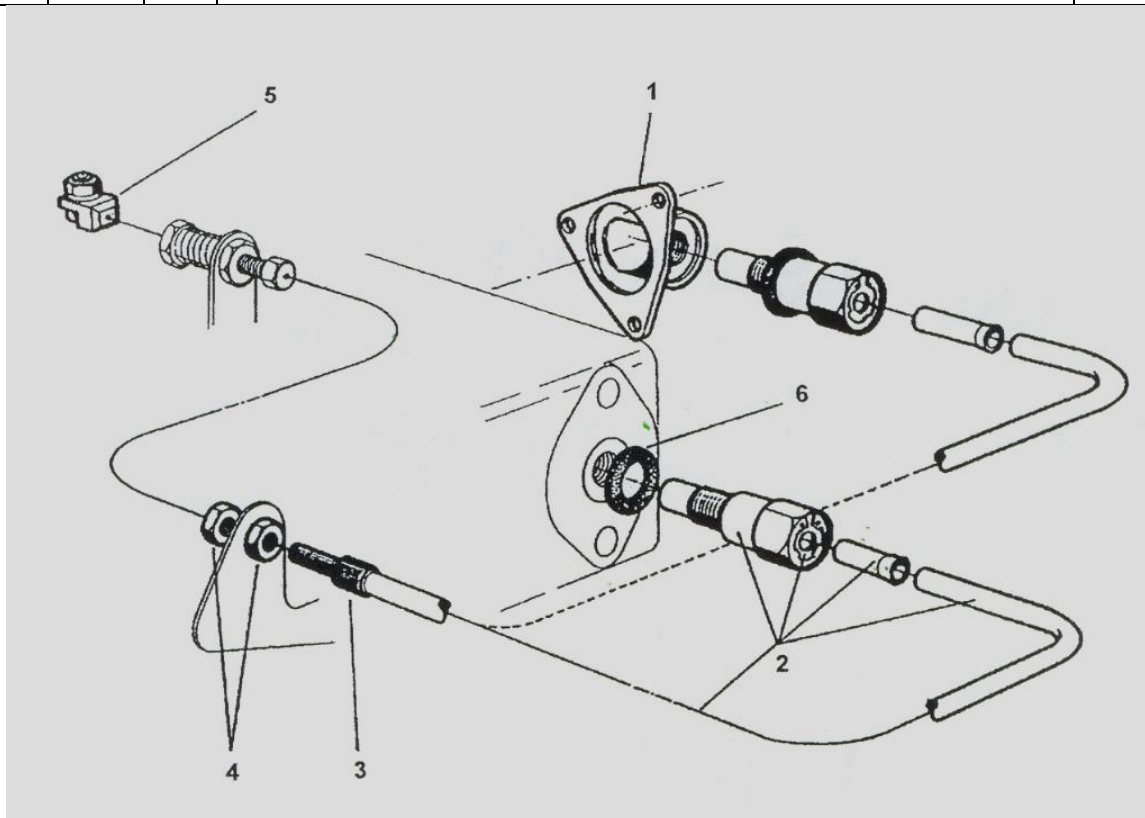
eMail: anlasser@indenor-retro.de

Mobil: 0049- 178- 6629038

Aut. Fast idling controls



| P | No | Designations | Qual. |
|---|------|-----------------|-------|
| 1 | 1601 | Housing | Recon |
| 2 | 1602 | Thermostat | New |
| 3 | 1603 | Adjusting screw | Recon |
| 4 | 1604 | Nut | Recon |
| 5 | 1605 | Cable clamp | Recon |
| 6 | 1605 | Gasket | new |



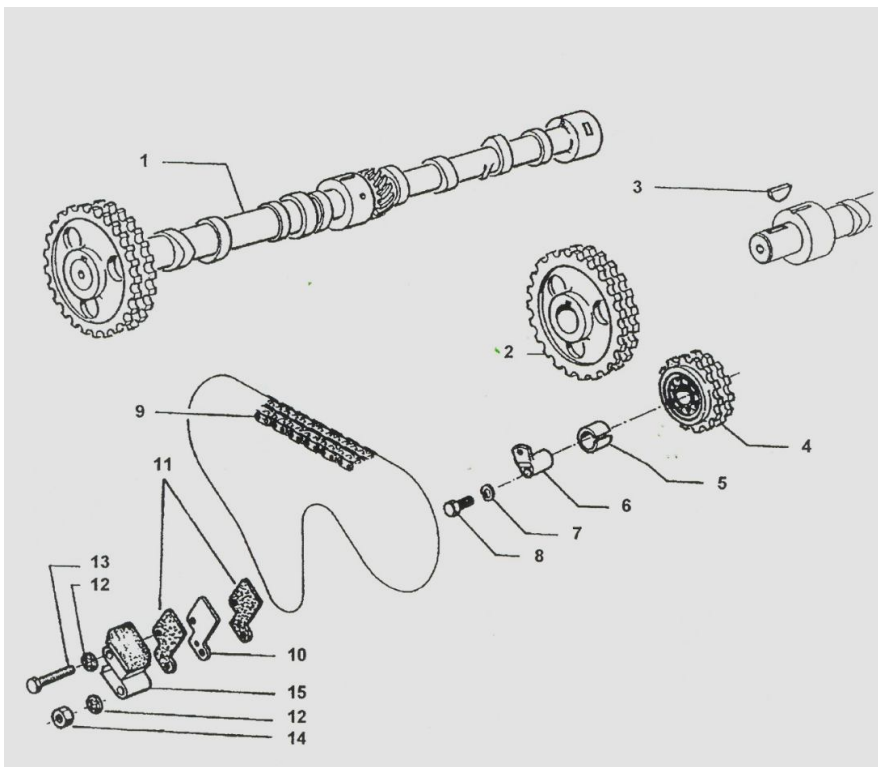


eMail: anlasser@indenor-retro.de

Mobil: 0049- 178- 6629038

Camshaft
 Ambre a Cames
 Nockenwelle
 Albero a Came

| P | No | Designations | Qual. |
|----|------|---------------------------|-------|
| 1 | 1701 | Camshaft | Recon |
| 4 | 1704 | Pinion on eccentrics assy | Recon |
| 5 | 1705 | Spacer | Recon |
| 6 | 1706 | Eccentric bush | Recon |
| 8 | 1708 | Screw | Recon |
| 9 | 1709 | Timing chain | New |
| 10 | 1710 | Chain tensorer plate | Recon |
| 15 | 1715 | Chain tensioner | New |





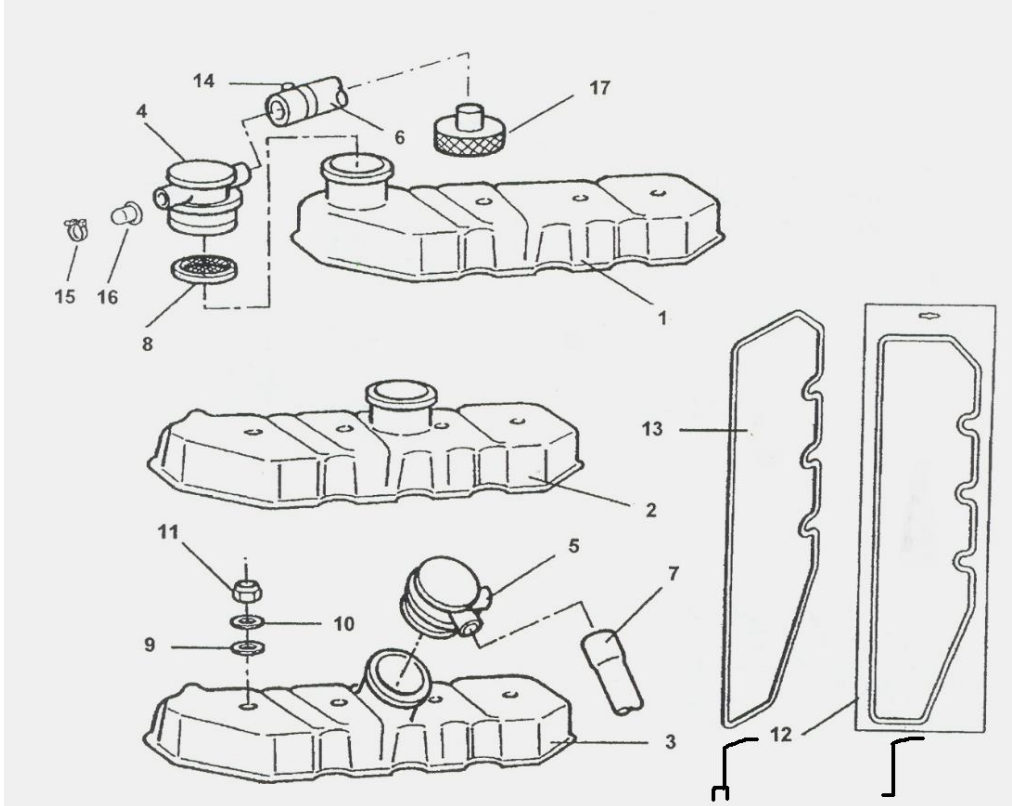
eMail: anlasser@indenor-retro.de

Mobil: 0049- 178- 6629038

Cover
Couvre
Zylinderkopf – Abdeckungen
Coperchio
Tapaculata



| P | No | Designations | Qual. |
|----|------|--------------------|-------|
| 1 | 1801 | Cylinderhead cover | Recon |
| 2 | 1802 | Cylinderhead cover | Recon |
| 3 | 1803 | Cylinderhead cover | Recon |
| 4 | 1804 | filling cap | Recon |
| 8 | 1808 | Sieve | Recon |
| 9 | 1809 | Gasket | Neu |
| 10 | 1810 | Washer | Recon |
| 11 | 1811 | Nut | New |
| 12 | 1812 | Gasket Silikon | New |
| 13 | 1813 | gasket Gummi | New |
| | | | |



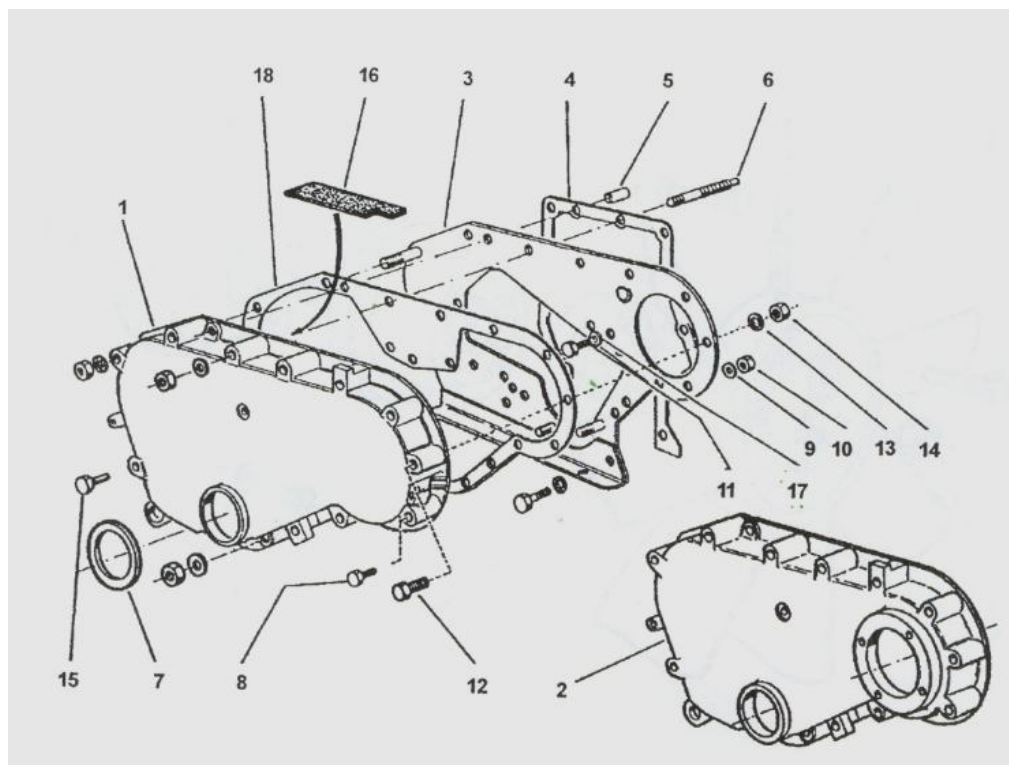
Timing gear cover

Steuergehäuse

Scatola della distribuzione

Carter de la distribucion

| P | No | Designations | Qual. |
|----|------|-------------------------|-------|
| 1 | 1901 | Timing gear housing | Recon |
| 2 | 1902 | Timing gear housing | Recon |
| 3 | 1903 | Timing gear plate assed | Recon |
| 4 | 1904 | Gasket | New |
| 6 | 1906 | Stud | Recon |
| 7 | 1907 | Rotary seal | New |
| 8 | 1908 | Screw M7 | new |
| 9 | 1909 | Washer M7 | New |
| 10 | 1010 | Nut M7 | new |
| 18 | 1918 | gasket | New |





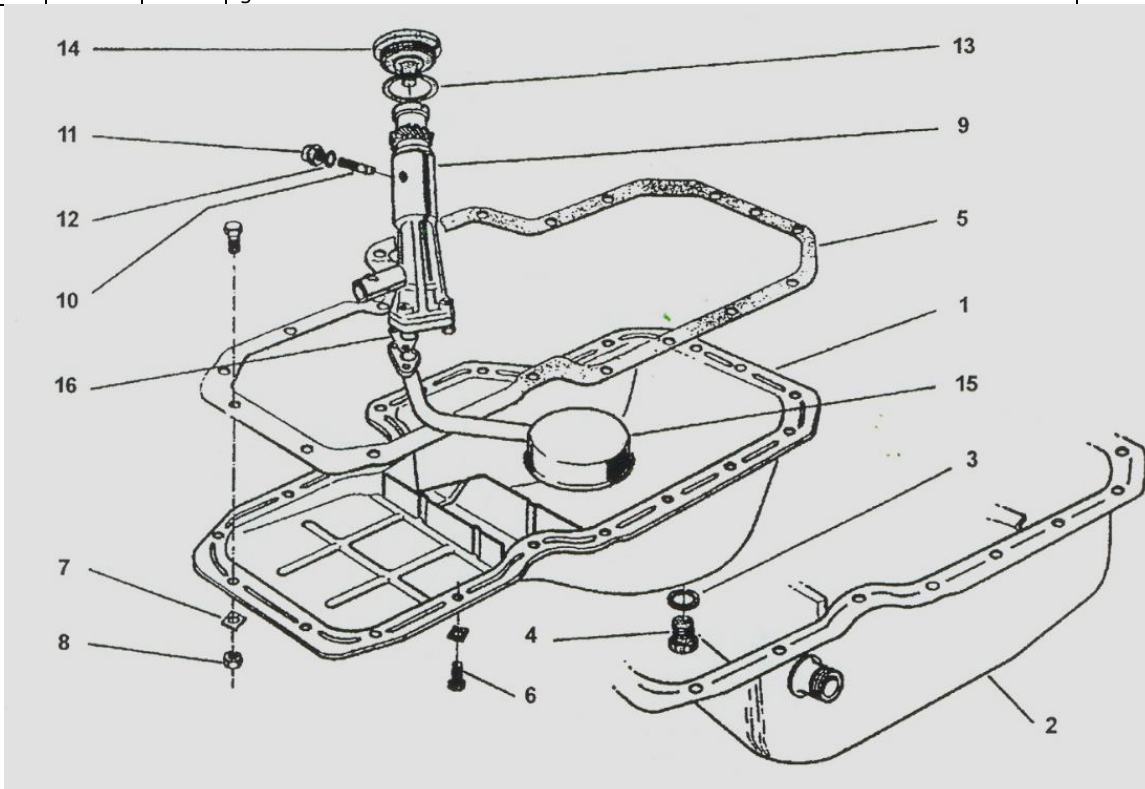
eMail: anlasser@indenor-retro.de

Mobil: 0049- 178- 6629038

Oilpan
Carter d' huile
Ölwanne
Coppa dell'olio
Carter inferior



| P | No | Designations | Qual. |
|----|------|------------------------|--------------|
| 1 | 2001 | Oilpan,steel, 5 liter | Recon |
| 2 | 2002 | Oilpan, steel, 7 liter | Recon New |
| 4 | 2004 | Screw | New |
| 5 | 2005 | Gasket | New |
| 6 | 2006 | Screw | new |
| 7 | 2007 | Washer | recon |
| 8 | 2008 | Nut | New |
| 9 | 2009 | Oilpump | New |
| 10 | 2010 | Screw | Recon |
| 11 | 2011 | Nut | New |
| 13 | 2013 | Shims | Recon |
| 14 | 2014 | Plug | Recon |
| 15 | 2015 | strainer | Recon |
| 16 | 2016 | gasket | new |



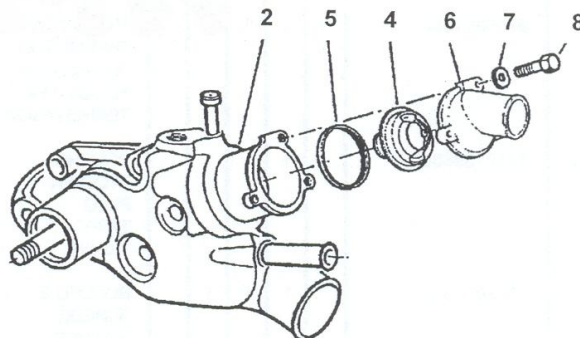
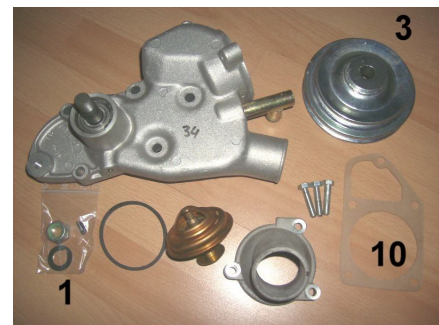
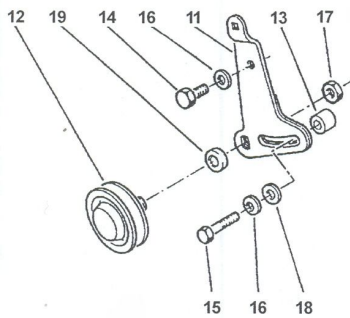


eMail: anlasser@indenor-retro.de

Mobil: 0049- 178- 6629038

Waterpump
Pompe a eau
Wasserpumpe
Pompa Aqua
Bombas de Agua

| P | No | Designations | Qual. |
|----|------|----------------------------|-------|
| 1 | 2101 | Cotter & nut | New |
| 2 | 2102 | Waterpump | New |
| 3 | 2103 | Pulley waterpump | New |
| 4 | 2104 | Thermostat | New |
| 5 | 2105 | Seal ring | New |
| 6 | 2106 | Housing | Recon |
| 7 | 2107 | Washer | New |
| 8 | 2108 | Screw M7 | New |
| | | | Recon |
| 10 | 2110 | Gasket | New |
| 11 | 2111 | Tensioner | New |
| 12 | 2112 | Pulley Assembled tensioner | New |
| 13 | 2113 | Socket | |
| 14 | 2114 | Screw M8 | New |
| 15 | 2115 | Bolt M8 | New |
| 16 | 2116 | Spring | New |
| 17 | 2117 | Washer | New |
| 19 | 2119 | Socket | |



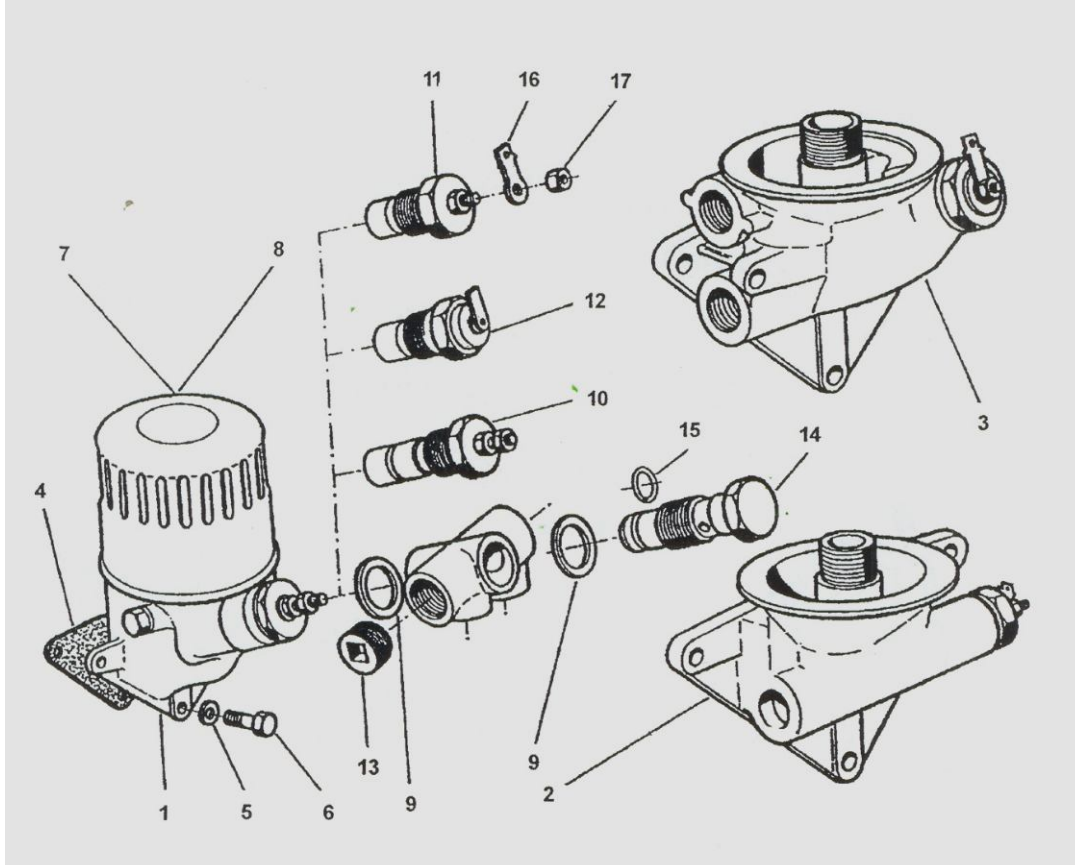


eMail: anlasser@indenor-retro.de

Mobil: 0049- 178- 6629038

Oil Filter
 Filter a Huile
 Ölfilter
 Filtri Olio
 Filtros de aceite

| P | No | Designations | Qual. |
|----|------|-------------------------|-------|
| 1 | 2201 | Oilfilter support | Recon |
| 2 | 2202 | Oilfilter support | Recon |
| 3 | 2203 | Oilfilter support turbo | Recon |
| 4 | 2204 | gasket | New |
| 7 | 2207 | oilfilter 18 x 150 | New |
| 8 | 2208 | oilfilter 20 x 150 | New |
| 10 | 2210 | Thermistor | New |
| 11 | 2211 | Pressure switch | New |
| 12 | 2212 | Thermocontact | New |





www.indenor-retro.de
Ersatzteile für INDENOR Dieselmotoren

Spare parts for indenor diesel engines
 Parti di ricambio indenor diesel

Pieces de rechange indenor diesel
 Piezas de requestos indenor diesel

eMail: anlasser@indenor-retro.de

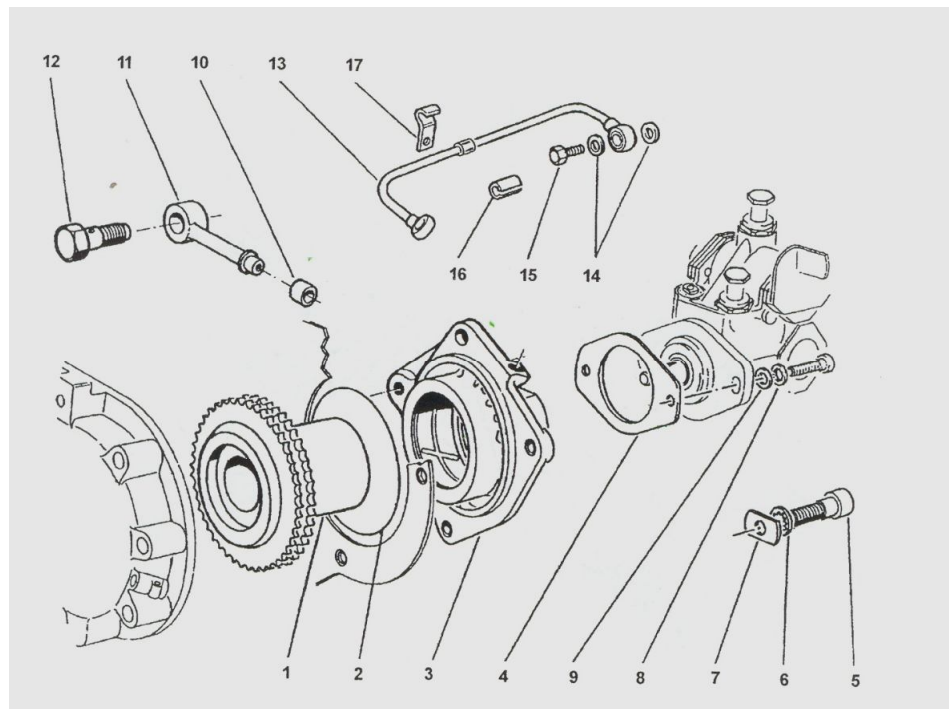
Phon: 0049- 395 7760571

Fax: 0049- 395 7760572

Mobil: 0049- 178- 6629038

Pumps
 Pompe
 Pumpen
 Pompe
 Bombas

| P | No | Designations | Qual. |
|----|------|-------------------------|-------|
| 1 | 2301 | Injection pump hub gear | Recon |
| 2 | 2302 | Gasket ring | New |
| 3 | 2303 | Bracket | Recon |
| 4 | 2304 | Gasket | New |
| 5 | 2305 | Screw | New |
| 6 | 2306 | Washer | new |
| 7 | 2307 | Scheibe | Recon |
| 10 | 2310 | Gasket | New |
| 11 | 2311 | Tube | Recon |
| 12 | 2312 | screw | Recon |





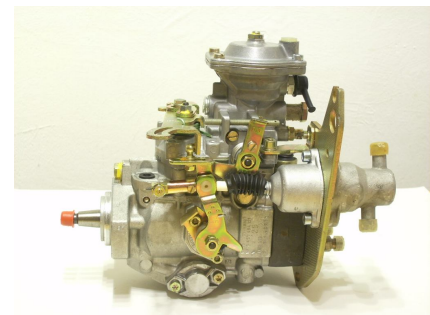
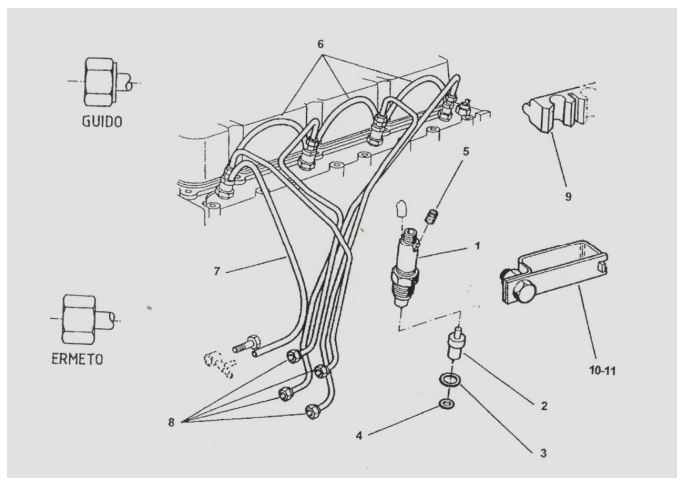
eMail: anlasser@indenor-retro.de

Mobil: 0049- 178- 6629038

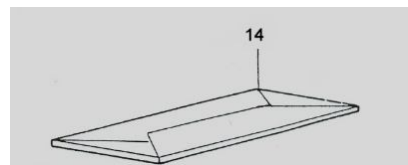
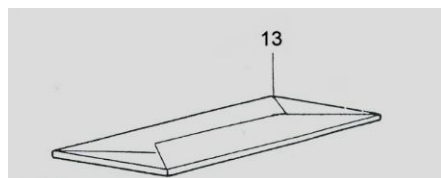
Injectors – Pipes - Pomp
 Injecteurs – Tubes - Pompe
 Düsen – Rohre - Pumpe
 Iniettori – Tubo
 Inyect. Tubo



| P | No | Designations | Qual. |
|----|------|--|------------|
| 1 | 2401 | Injector holder BOSCH Injector holder ROTO DIESEL CAV | New New |
| 2 | 2401 | Injector | New |
| 3 | 2403 | Gasket | New |
| 4 | 2404 | Washer | New |
| 5 | 2405 | Plug | New |
| 6 | 2406 | Connecting pipe | New |
| 7 | 2407 | Connecting pipe | New |
| 8 | 2408 | Pipes | Recon |
| 9 | 2409 | Cramp | Recon |
| 12 | 2412 | Injection pump BOSCH Incektion pump ROTO DIESEL CAV | New New |
| 13 | 2413 | Gasket kit BOSCH pump | New |
| 14 | 2414 | Gasket kit ROTO pump | New |



12



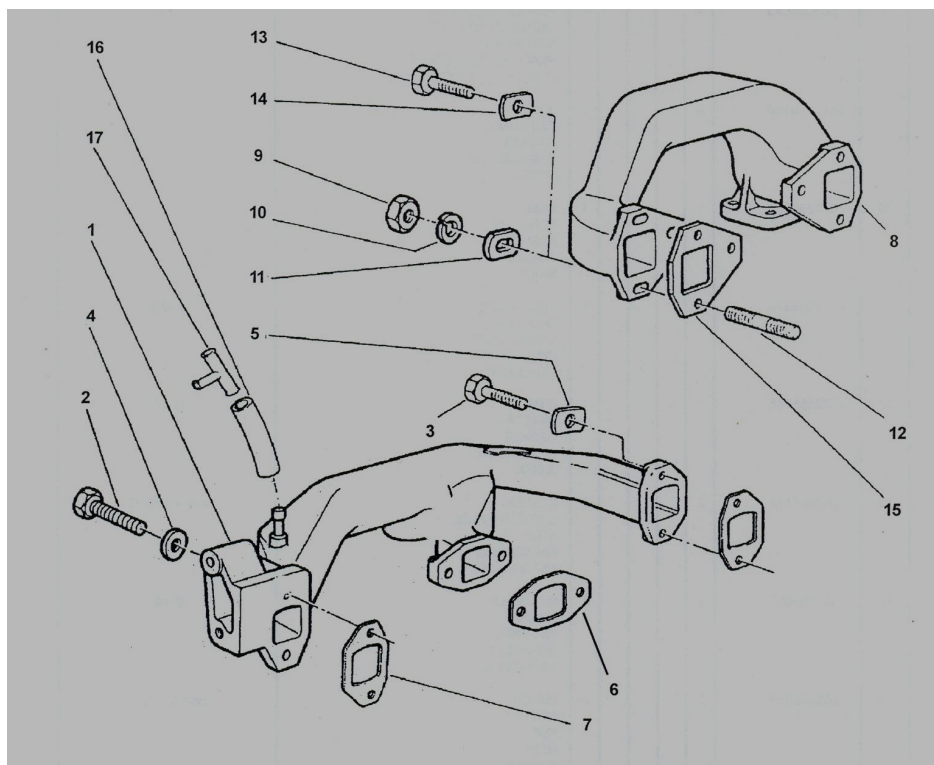
24

eMail: anlasser@indenor-retro.de

Mobil: 0049- 178- 6629038

manifolds
 collecteurs
 Krümmer
 di scarico
 de escape

| P | No | designations | Qual. |
|----|------|------------------|-------|
| 1 | 2501 | Inlet manifold | Recon |
| 2 | 2502 | Screw | New |
| 3 | 2503 | Screw | New |
| 4 | 2504 | screw | New |
| 5 | 2505 | Washer | Recon |
| 6 | 2506 | Gasket | New |
| 7 | 2507 | Gasket | New |
| 8 | 2508 | Exhaust manifold | Recon |
| 9 | 2509 | Nut | New |
| 10 | 2510 | Washer | New |
| 11 | 2511 | Washer | New |
| 12 | 2512 | Stud | New |
| 13 | 2513 | Nut | New |
| 14 | 2514 | Washer | New |
| 15 | 2515 | Gasket | New |
| 16 | 2516 | connection | new |



25

www.indenor-retro.de
 Ersatzteile für INDENOR Dieselmotoren

Spare parts for indenor diesel engines
 Parti di ricambio indenor diesel

Pieces de rechange indenor diesel
 Piezas de requestos indenor diesel

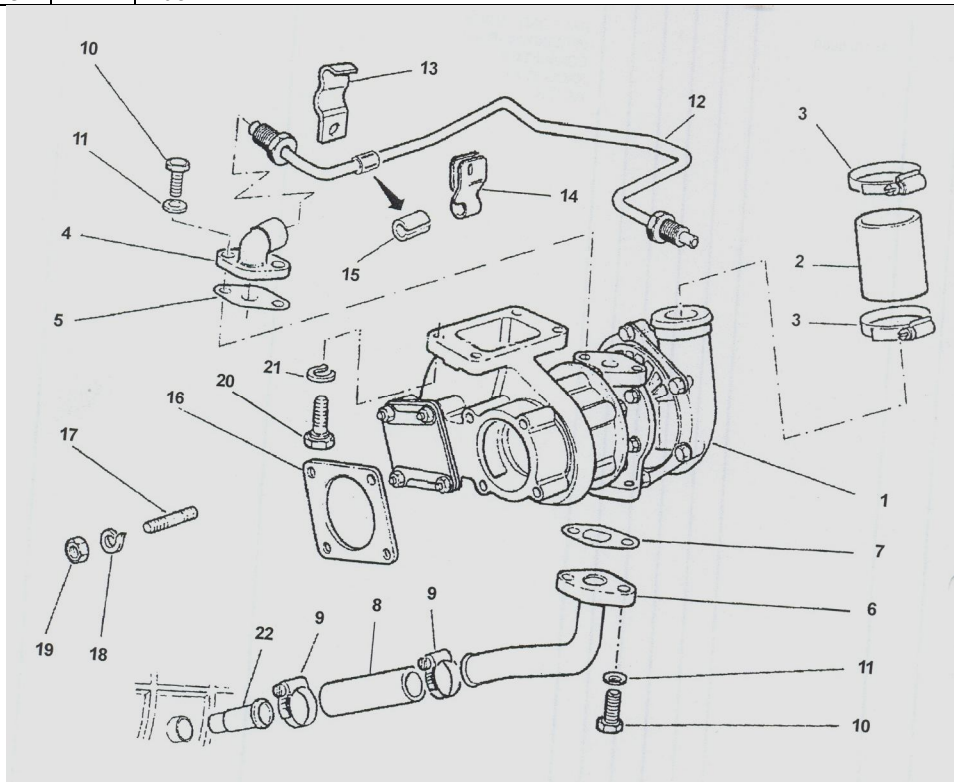
eMail: anlasser@indenor-retro.de

Mobil: 0049- 178- 6629038

charger
 compresseur
 Turbolader
 compressori
 compressors



| P | No | Dastignations | Qual. |
|----|------|----------------------|-------|
| 1 | 2601 | Turbo charger GARRET | recon |
| 2 | 2602 | Union | New |
| 3 | 2603 | Clamp | New |
| 4 | 2604 | Flange | Recon |
| 5 | 2605 | Gasket | New |
| 6 | 2606 | Union | Recon |
| 7 | 2607 | Gasket | New |
| 8 | 2608 | Union | New |
| 9 | 2609 | Collar | New |
| 10 | 2610 | Screw | New |
| 11 | 2611 | Washer | New |
| 12 | 2612 | Tube | Recon |
| 13 | 2613 | Slide | Recon |
| 14 | 2614 | Slide | Recon |
| 15 | 2615 | Ring | New |
| 16 | 2616 | Gasket | New |
| 17 | 2617 | Stud | New |
| 18 | 2618 | Washer | New |
| 19 | 2619 | nut | New |



26



www.indenor-retro.de
 Ersatzteile für INDENOR Dieselmotoren

Spare parts for indenor diesel engines
 Parti di ricambio indenor diesel

Pieces de rechange indenor diesel
 Piezas de requestos indenor diesel

eMail: anlasser@indenor-retro.de

Mobil: 0049- 178- 6629038

Starter
 Demarreur
 Anlasser
 Avviatore
 Motores de Arranque

| P | No | designation | Qual. |
|---|------|--|-----------|
| 1 | 2702 | Startermotor 12 Volt, 3 bolts, 6kg, planetgear | New Recon |
| | | | |
| | | | |



1



27

www.indenor-retro.de
 Ersatzteile für INDENOR Dieselmotoren

Spare parts for indenor diesel engines
 Parti di ricambio indenor diesel

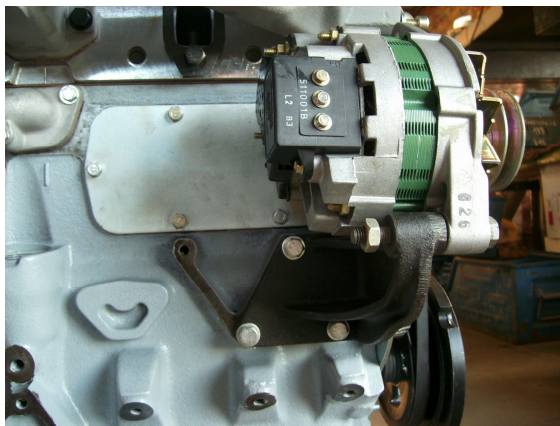
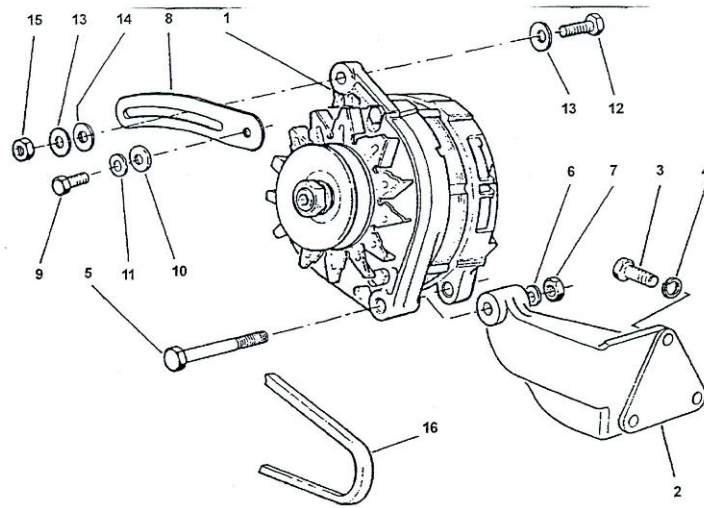
Pieces de rechange indenor diesel
 Piezas de requestos indenor diesel

eMail: anlasser@indenor-retro.de

Mobil: 0049- 178- 6629038

Alternator
 Wechselstromlichtmaschine
 Alternateurs
 Alternatori
 Alternadores

| P | No | designations | Qual. |
|---|------|---------------------------|-------|
| 1 | 2801 | Alternator, only exchange | New |
| 2 | 2802 | support standard | New |
| | | | |
| | | | |



Engine heater 220 volt, cold countries

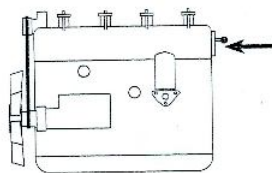
Motorheizung 220 volt



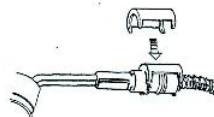
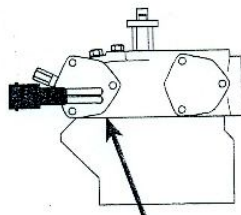
| P | No | designations | Qual. |
|---|------|-------------------------------|-------|
| 1 | 2901 | Engine heater 220 volt, 500 w | New |

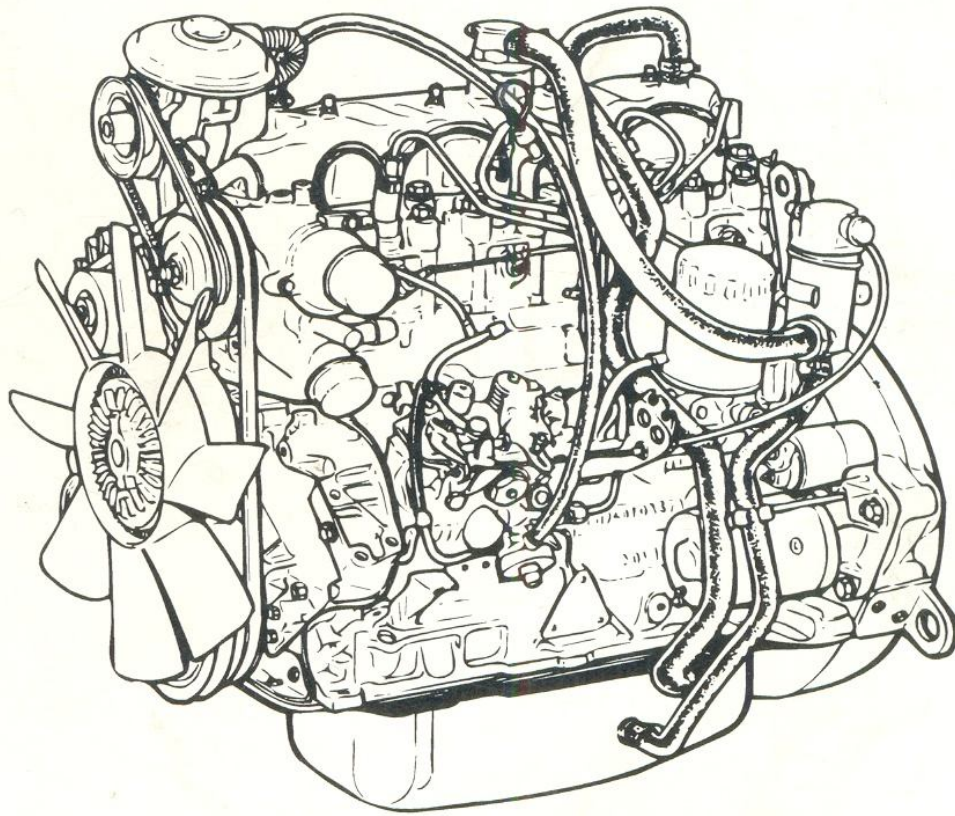
Motorvorwärmung

Durch das Nutzen dieses 220 Volt / 550 Watt Heizelementes im Kühlwasserkreislauf wird bei kalter Witterung die Warmlauf-Phase des Motors wesentlich verkürzt. Schadstoffausstoß und Verschleiß werden deutlich reduziert. Die Innenraumheizung gibt sofort Wärme ab. (Zur Erhöhung des Komforts könnte die Motorvorwärmung über eine Zeitschaltuhr geregelt werden und der Innenraum mit einem 230V Warmluftgebläse vorgewärmt werden).
 Inhalt: Heizelement, 220V Kabel für Motorraum, 220V Anschlusskabel, Befestigungsmaterial, Einbauanleitung



Anbringung des Heizelementes im linken der beiden hinteren Deckel des Zylinderkopfes





indenor-retro

printed in germany
